

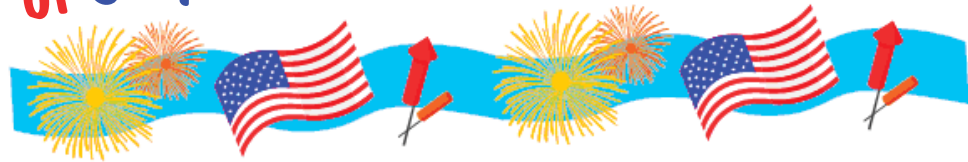


Prices subject to change without notice.
Freight extra unless otherwise noted.
Financing available.



1-800-346-7805 TOLL FREE ORDER LINE
2910 Schoeneck Road Macungie, PA 18062

Happy 4th of July!



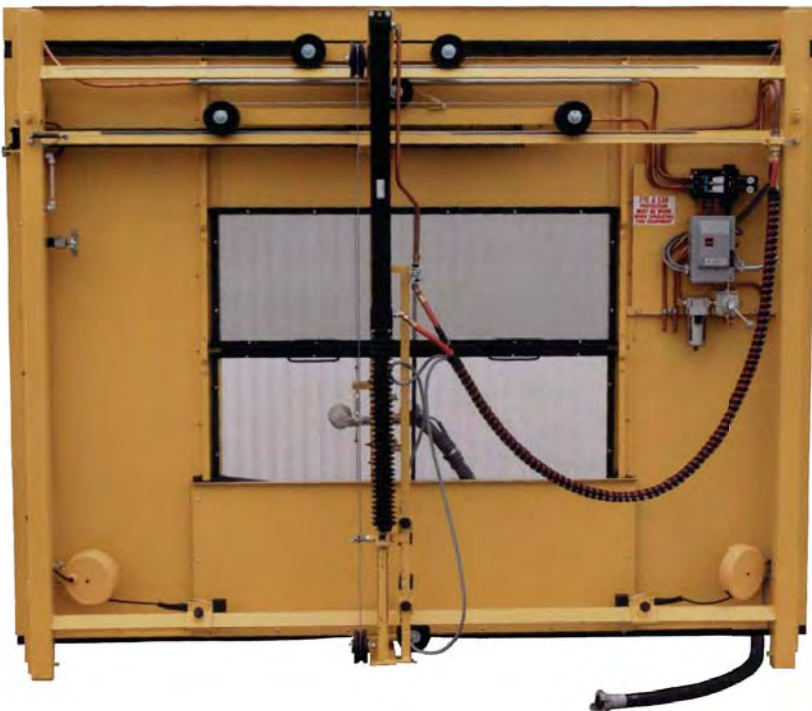
JULY 2011 SALE FLYER

HIRONS MODEL "J" AUTOMATIC BLASTER

This unit is designed for the constant motion of automatic blasting and features full range of speed and independent control of horizontal and vertical motion.

It is not an attachment or power assist for a manual adjustment curtain.

This unit can be installed on your present set-up or moved later for future plans.



Air Requirements

2 CFM

Electrical Requirements

7 Amp/120 Volt, Single Phase

Available in 2 sizes:

8FT. MODEL

w/60" Horizontal Travel
or

10FT. MODEL

w/84" Horizontal Travel

KAESER AIR COMPRESSORS

Kaeser has been around since 1918 and their portable rotary screw air compressors feature the power-saving proprietary Sigma Profile air end, and a heavy duty industrial engine. This very efficient combination allows these units to produce more air with less horsepower. They are slow running and well built to withstand years of tough operations. These quiet and compact units come with a 2 year warranty. The units need only minimal maintenance, and provide easy access to internal components.



Model	Rated CFM @ 100 PSI	Engine	Dimensions LxWxH (in.) (*with towbar)	Weight Lbs.	PRICE
M15	50	20 HP Gas Honda	38.5 (52*) x 32 x 31	400	\$6,768.30
M17	60	25 HP Gas Honda	38.5 (52*) x 32 x 31	400	\$7,857.30
M26	92	25 HP Diesel Kubota	60 (125) x 50 x 47	1034	\$10,688.70
M50	185	42 HP Diesel Kubota	81 (133) x 56 x 49	1555	\$11,389.10

Larger units and skid mount units also available.

TIRED OF WATER IN YOUR BLAST MACHINE??

HANKISON REFRIGERATED COMPRESSED AIR DRYERS

Cool, dry and clean your compressed air supply in one compact easy-to-use package



- * Eliminates the need to install and maintain filters, separators, or extractors on your blast machine.
- * Keeps blast machines from clogging.
- * **Cools...**accepts high temperature air to 180°F, 82°C directly from your air compressor...no separate aftercooler and separator required.
- * **Dries...**removes moisture...eliminates troublesome water from downstream air lines and equipment. Reliable condensate drain-air operated...automatically discharges water and oil from dryer.
- * **Cleans...**two stage filter/separator has an integral 3 micron filter that removes solid contaminants and 60% of oil aerosols.
- * **Compact...**saves valuable floor space.
- * No separate components to pipe together...simply connect inlet and outlet connections to the air system, plug in and it's ready to operate.
- * Continuously dries and cleans without adjustments.
- * Eliminates the need to frequently replace desiccants, paper rolls, etc.
- * Hermetic refrigeration system...requires no maintenance or adjustments.

When calling for prices please have available your cfm requirements and the air temperature that will be entering the air dryer.



1-800-346-7805 (610) 966-2287 Fax
 2910 Schoeneck Road Macungie, PA 18062
 www.wenzco.com email: Sales@wenzco.com



HANKISON GRADE 9 MOISTURE SEPARATOR/FILTER

Heavy duty metal construction
Slide gauge to indicate when to change filter

Removes:

- * All solids 3 microns & larger
- * Liquid loads up to 25,000 ppm by weight
- * 99% Of water droplets
- * 40% Of aerosols

Capacity	Price
60 CFM	\$227.00
100 CFM	\$260.00
170 CFM	\$399.00
250 CFM	\$551.00

WENZCO SUPPLIES INC. 1250 CFM REVERSE PULSE CARTRIDGE DUST COLLECTOR

Features Include:

- 2 High efficient cartridges for filtration efficiency of 99.7% against 1/2 micron particles
- Filters are cleaned with a reverse pulse of compressed air controlled by sequential timer and solenoids.
- Filtered air can be returned to your shop in most applications.
- Abrasive resistant 8" diameter air inlet to extend filter life
- Acoustical dampening package standard with unit
- 2 HP unit designed to operate on single or 3 phase
- Attachment for 5 gal. bucket to collect dust
- Standard electrical package includes soft motor starting, ramp acceleration, digital led display, motor protection and more.
- One year warranty

1250 CFM 2 HP Dust Collector (For room size 8' x 4' x 7'-6")
\$4087.50 DUSTCO1250

2500 CFM 5 HP Dust Collector (For room size 12' x 5'-3" x 8')
\$ 7,878.25 DUSTCO2500

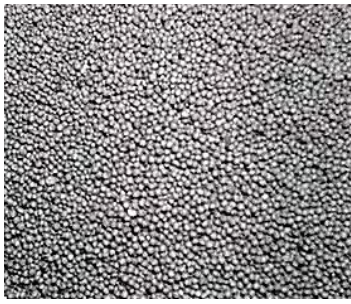
3500 CFM 7-1/2 HP Dust Collector (For room size 12' x 7'-4" x 8')
\$11,812.90 DUSTCO3500

"OTHER SIZES ARE AVAILABLE"



1-800-346-7805 (610) 966-2287 Fax
2910 Schoeneck Road Macungie, PA 18062
www.wenzco.com email: Sales@wenzco.com





SINTER BALL *"A Superior Blasting Media"*

Sinter Ball is a durable long lasting media that lasts 2 to 3 times longer than aluminum oxide, and is much more economical than Stoneblast. Comes in a 20-40 grit. It is not affected by environmental humidity, contains no free silica, and does not rust (no iron contamination).

50 LBS . . . \$51.84 bag
500 LBS . . . \$48.31 bag
1000 LBS . . . \$43.56 bag
2000 LBS . . . \$40.03 bag

FILLER JAR & BRUSH



This unbreakable plastic jar has a round, long bristle brush attached to the lid. Brush is replaceable.

\$19.00 FILLJA



HEAVY DUTY STENCIL ROLLER

Features a 3" x 1-1/2" rubber roller and a bent solid aluminum handle to exert more pressure to the stencil for a tighter bond. Weighs about 1lb.

\$21.41 ROLL

SPECIAL OFFER

PATCH RUBBER

Inexpensive stencil rolls for patching areas of unprotected stone surfaces during blasting. 18-3/4" x 10yd. rolls (#123Y)

\$50.00 ROLL!

"While Supply Lasts"

NASHUA DUCT TAPE



This duct tape is used with stencil to mask areas that do not take direct force blasting, reducing the amount of stencil used. We offer [Top of the Line, High Adhesive NASHUA 357](#) so you're guaranteed the highest quality.

2" x 60yd. Roll \$12.00 TAPEDU2H

4" x 60yd. Roll \$23.88 TAPEDU4H



1-800-346-7805 (610) 966-2287 Fax

2910 Schoeneck Road Macungie, PA 18062

www.wenzco.com email: Sales@wenzco.com

TAPERED BORON CARBIDE NOZZLES 1/8", 3/16" & 1/4"



Boron Carbide is second only to diamonds in hardness.

- *Longer Life
- *Lower Cost Per Use
- *Reduce Down Time
- *Maintain Efficiency

\$117.80 EACH

FLANGE VENTURI BORON CARBIDE NOZZLES 3/16" & 1/4"



Long wearing nozzles that cut up to 50% faster. The venturi design increases the velocity of the abrasive grain so it cuts faster.

\$179.55 EACH

THREADED VENTURI BORON CARBIDE NOZZLES 3/16" & 1/4"



These threaded nozzles also have the venturi design that increases the velocity of the abrasive grain so they cut faster. They feature an all metal outer jacket to fit standard nozzle holders.

\$173.25 EACH

LIBERATOR 6000 ELECTRO-HYDRAULIC TRUCK CRANE

Liberator cranes include many unique and innovative features that are designed to maximize duty cycle and prevent costly breakdowns.

Cranes can be easily installed by your local welding shop!



FEATURES

- Crane capacity 6000lbs at 6 ft, 1600lbs at 22 ft.
- **POWER ARM** technology for the most efficient booming in the industry.
- Smooth and rugged all steel worm gear rotation system
- Full power boom elevation with the exclusive **POWER ARM** boom technology, 360° power rotation, power boom extension (10'-16'), manual boom extension (16'-22') and power hoist (up and down).

extension (16'-22')

All power features are controlled with the 25' hand held remote control

- Self-contained Electro-Hydraulic system supplies 2.5 gallon per minute
- 24 Volt DC electric pump motor powered by an XOT (extended-on-time) motor equipped with four (4) field windings wrapped with nomex.
- Large diameter swing bearing has all-steel worm gear for positive "hillside" load locking
- "Extended On Time" hydraulic system increases duty cycle and prevents costly breakdown.
- Reliable 24 volt rapid recovery power supply that actually recharges a battery while the crane is operating
- 100% Solid state electric control system with arc suppression circuitry that virtually eliminates the causes of electric problems and downtime in electric cranes (No automotive type solenoids)
- Overload protection prevents Hoist Up, Boom extension and Boom Down
- Crane is designed to be installed on trucks of 14,500 GVW or higher rating.

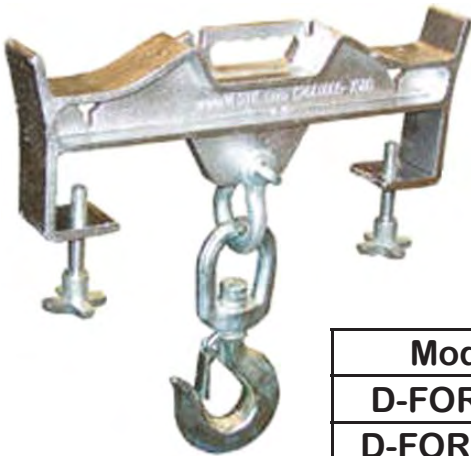
\$15,925.50
CRANLI6000PXTW22

Options: Pedestal mount for mounting on flatbed trucks . . . \$ 854.10
Extendable Outrigger/Stabilizer \$1214.10

Also available: Liberator 2000, 3200, 4000 & 5000 units

1-800-346-7805 (610) 966-2287 Fax
2910 Schoeneck Road Macungie, PA 18062
www.wenzco.com email: Sales@wenzco.com





FORK TRUCK HOISTING HOOK

Convert your fork truck into a swivel hook in a matter of seconds. The easy to attach Hoisting Hook does not require the assistance of special tools. Secured to the fork truck by means of a 36" long safety restraint and screw clamps. Units are zinc plated.

Makes it easy to attach your sling bar, sling yoke or Monumentall Lifting Clamp!

Model	Fork Pocket Size (WxH)	Capacity	Price
D-FORK4S	6-3/4" X 2-1/2"	4,000 LBS.	\$193.00
D-FORK10S	6-3/4" X 3-1/2"	10,000 LBS.	\$341.00

MONUMENTALL

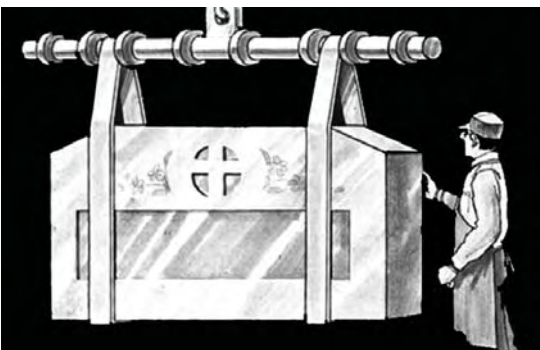
THE ULTIMATE IN MONUMENT LIFTING CLAMPS

This semi-automatic top mounting lifting device can be used in all weather. Safely pick up polished and steeled surface monuments 3" to 15" thick and up to 2500 lb. Does not mar stone surface. Bonded neoprene pads on metal edges protect against chips. Can also be used for precast curbing, parking blocks, etc. This single line lifting device works with any hoist lifting equipment. OSHA accepted. Weight 48 lb.

\$1147.50 CLAMMONU



STONE HANDLING SLINGS



Slings are made of special abrasion resistant 4-inch nylon webbing for handling stone, concrete and building panels. They feature a soft abrasion resistant wear pad woven onto the load side of the webbing, providing outstanding protection for the sling and the polished stone surfaces.

Web Width	Capacities			Base Price 3 ft. Long	Adder Per ft.
	Vertical	Choker	Basket		
4 "	8,000 lb.	6,000 lb.	16,000 lb.	\$64.60	\$13.03



1-800-346-7805 (610) 966-2287 Fax
 2910 Schoeneck Road Macungie, PA 18062
 www.wenzco.com email: Sales@wenzco.com